

A class of its own

## JUMAG STEAM BOILER



## INTRODUCTION

FLO1060  
STEAM BOILER

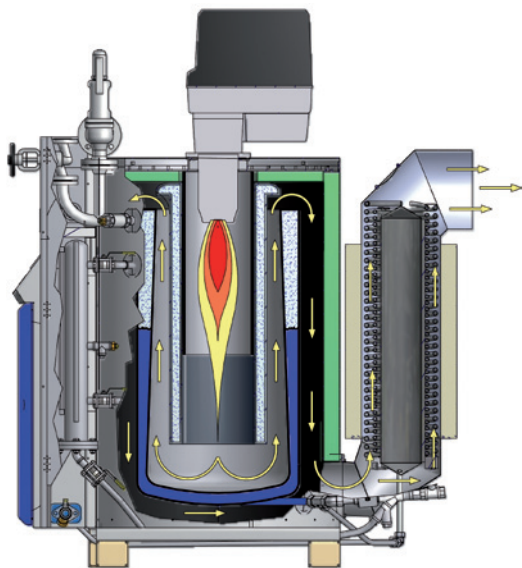
# FLO1060 – 1 ton steam per hour at its best

## Simple

- Boiler category III ( $PS \cdot V < 3.000$ ) after DGRL 2014/68/EU
- Less official requirements than boiler category IV (in Germany and many other countries)

## The other boiler functionality

- No coils to become fouled or plugged
- No maintenance intensive piston pump



- Water level maintained with the internal centrifugal pump supplying feedwater to the JUMAG Economizer
- A multi-pass, finned fire side heat exchanger effectively transfers heat from the flue gas to the water
- The very low exhaust temperature is significant proof of the very high JUMAG efficiencies that are obtainable (up to >100%)

QUICK-AND-EASY FUEL CHANGE POSSIBLE

STEAM PRESSURE CONTROLLED  
BURNER (MODULATING MODUS  
IN GAS OPERATION)

EASY AND INTUITIVE GRAFIC-  
TOUCHSCREEN

SELF-MONITORING PLC

SWITCH CABINET IN  
DURABLE DESIGN

INTEGRATED LOW-MAINTENANCE  
CENTRIFUGAL PUMP

INDUCTIVE WATER  
LEVEL CONTROL

STEAM BOILER FLO1060



## STEAM BOILER FLO1060

- Fast steaming - up to maximum output within 10 minutes
- Vertical heat exchanger
- Coilless design
- Centrifugal pump feedpump included
- Low-maintenance
- Highly energy-efficient

**STATE-OF-THE-ART REPLACEABLE STANDARD BURNER**

**VERY HIGH STEAM QUALITY WITH  
VERY LITTLE WATER CARRY OVER**

**VERY HIGH EFFICIENCY (UP TO 97%)  
THROUGH FIRST JUMAG ECONOMIZER**

**MANY SURFACES AND COMPONENTS  
IN STAINLESS-STEEL DESIGN**

**EFFICIENCY > 100% POSSIBLE THROUGH  
OPTIONAL JUMAG DOWNSTREAM  
ECONOMIZER (NOT SHOWN)**

**AUTOMATIC BLOW-DOWN  
AND DESALINATION**

**VERY ROBUST AND DURABLE  
LOW WATER CONTENT HEAT EXCHANGER**

ILLUSTRATION SHOWS EXAMPLE CONFIGURATION

### **Very economic, reliable and safe to operate**

- Parallel connection of several steam boiler possible
- Partial and multi redundancy possible through modular steam plant concept

### **The better heat exchanger**

- Double walled low water content boiler
- Wall thickness up to 11 mm
- Very robust and durable
- Very high energy storage capacity



**The JUMAG heat exchanger  
– proven for 40 years**

# A CLASS OF ITS OWN – JUMAG STEAM BOILER

## TECHNICAL DATA STEAM BOILER FLO1060

### TECHNICAL DATA STEAM BOILER FLO1060

BOILER TYPE	FLO1060	2 x FLO1060 (MDA2120)	3 x FLO1060 (MDA3180)	4 x FLO1060 (MDA4240)
Steam output up to	1,060 kg/h	2,120 kg/h	3,180 kg/h	4,240 kg/h
Heat load	760 kW	1,520 kW	2,280 kW	3,040 kW
Heat output	720 kW	1,440 kW	2,160 kW	2,880 kW
Max. operating pressure	13 barg (safety valve)			
Max. working pressure	6 bis 11 barg (lower pressure possible by JUMAG pressure reduction system)			
Heat up time in minutes	10			
Max. oil throughput (11.8 kWh/kg)	64.4 kg/h	128.8 kg/h	193.2 kg/h	257.6 kg/h
Max. gas flow rate (10.35 kWh/m³)	73.4 m³/h	146.8 m³/h	220.2 m³/h	293.6 m³/h
Power supply	400 V / 50 Hz			
Electrical load	6 kW	12 kW	18 kW	24 kW
All figures are to be understood as approximate data, please see our technical documentation for detailed information.				

All information are for orientation in product selection.

Changes due to technical developments are possible at any time. Product illustration may deviate from the original.

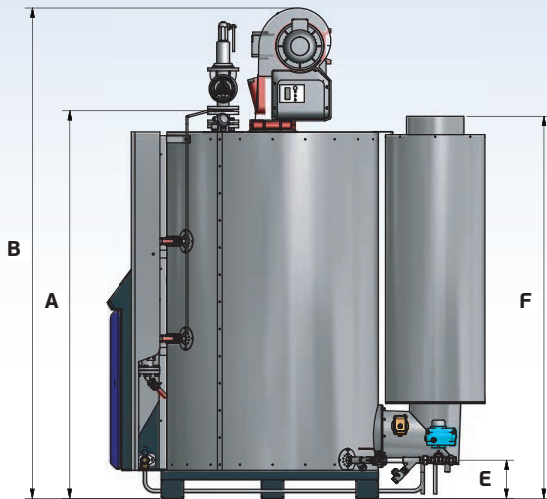
### DIMENSION STEAM BOILER

BOILER TYPE	FLO1060	2 x FLO1060 (MDA2120)	3 x FLO1060 (MDA3180)	4 x FLO1060 (MDA4240)
Steam Outlet Height, dimension A	2,071 mm			
Total Height, dimension B*	2,794 mm (gas burner) / 2,620 mm (oil burner)			
Total Width, dimension C**	1,130 mm	2,760 mm	4,390 mm	6,020 mm
Total Depth, dimension D**	2,019 mm			
Blow Down Line Connection, Dimension H	204 mm			
Flue Gas Exit, Dimension F	2,041 mm			
Flue Gas Connection, Inside diameter	301 mm	2 x 301 mm	3 x 301 mm	4 x 301 mm
Net weight	2,250 kg	2 x 2,250 kg	3 x 2,250 kg	4 x 2,250 kg
* FLO1060 equipped with WEISHAUPT Monarch burner ** service space not considered; minimum distance of 500 mm in between 2 FLO1060 considered All figures are to be understood as approximate data, please see our technical documentation for detailed information.				

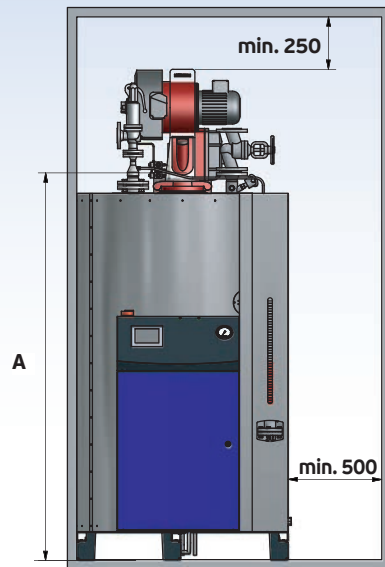


## TECHNICAL DATA STEAM BOILER FLO1060

### DIMENSION



### MINIMUM DISTANCES



### CONNECTIONS

#### Steam valve

Flange DIN 2633 DN 50

#### Safety valve

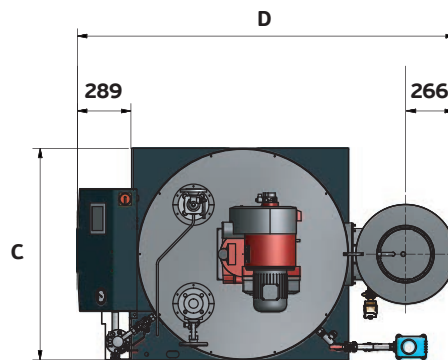
Flange DIN 2633 DN 32

#### Feed pump

1" inner thread (1" NPT)

#### Blow-off pipe

3/4" inner thread (3/4" NPT)



For more information, see [www.jumag.de](http://www.jumag.de)



All information are for orientation in product selection.  
 Changes due to technical developments are possible at any time. Product illustrations may deviate from the original.

A class of its own

## JUMAG STEAM BOILER



**STEAM BOILER  
FEEDWATER TANK  
FEEDWATER TREATMENT  
CONDENSATE COLLECTION TANK  
STAINLESS-STEEL CHIMNEY  
STEAM PLANT ACCESSORIES**



**Jumag Dampferzeuger GmbH**  
Badener Straße 8a  
69493 Hirschberg

Phone +49 (0) 6201 - 84603-0  
Telefax +49 (0) 6201 - 84603-15  
E-Mail [info@jumag.de](mailto:info@jumag.de)